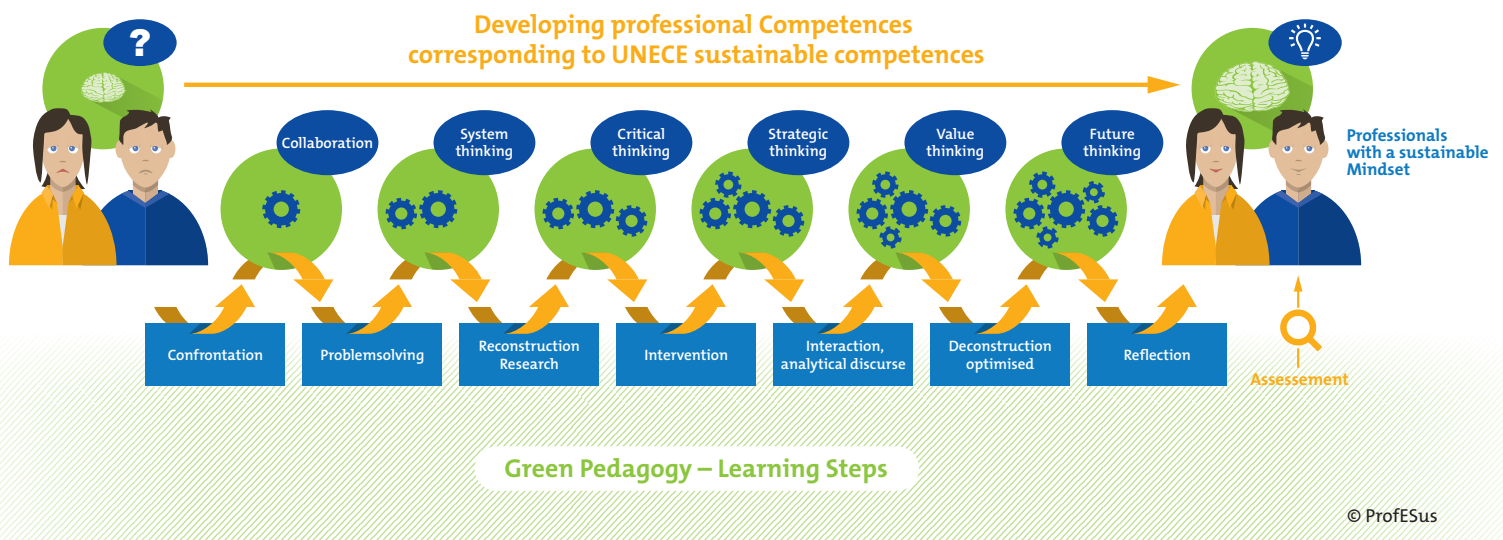


The ProfESus

Pathway to Discovering a Sustainable Mindset

Fig. 1: The ProfESus Pathway to Discovering a Sustainable Mindset



This graphic of the ProfESus Pathway to Discovering a Sustainable Mindset describes and symbolises

- the context which teachers/educators should consider and
- the process which teachers/educators should plan in detail to support learners in discovering their sustainable mindset.

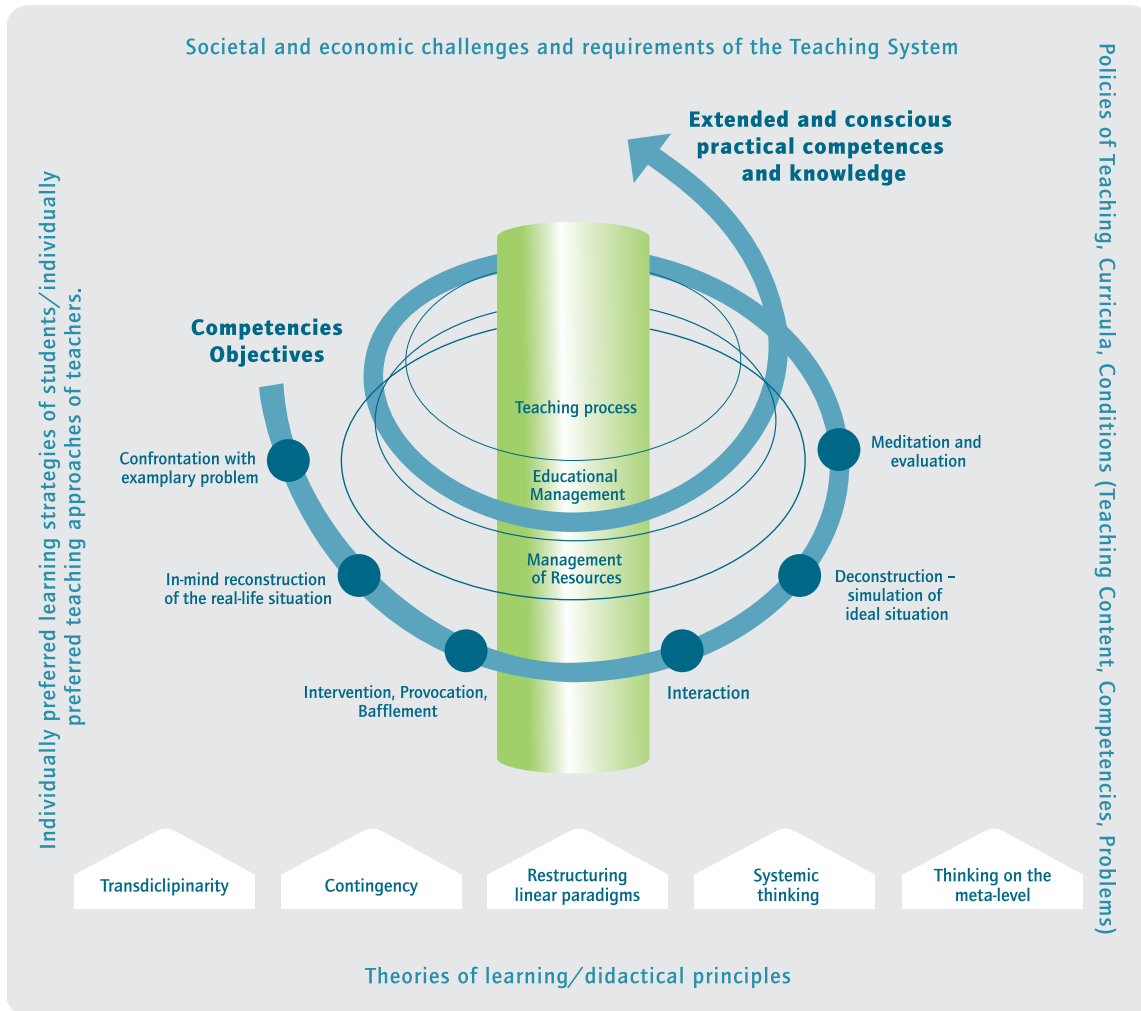
The context of this process is embedded in the **Green Pedagogy** approach based on the learning theory of constructivism.

Green Pedagogy integrates the learning theory of constructivism with the required dimensions of education for sustainable development (ESD) to focus on:

- collaboration,
- system thinking
- critical thinking,
- strategic thinking
- value thinking and
- future thinking.



Fig. 2: The concept of Green Pedagogy



The circle (spiral) in the concept of Green Pedagogy (see Fig. 2) – to implement motivation for sustainable development – combines key elements of constructivism, ESD and leads to innovative learning processes which are based on:

- Learner-centered methods – which means active learners, based on
 - Deliberate provocation
 - Personal consternation
 - Stimulated confusion (to think outside the box)
- Awareness building and
- Motivation for ESD
- Various methods/tools
- Learning through contradictions/discrepancies
- Situated learning (cases, scenarios, stories)
- Different learning environments (such as school classes/technical rooms/businesses/nature/museums/institutes)
- Envisioning to support inspiration and reflection.

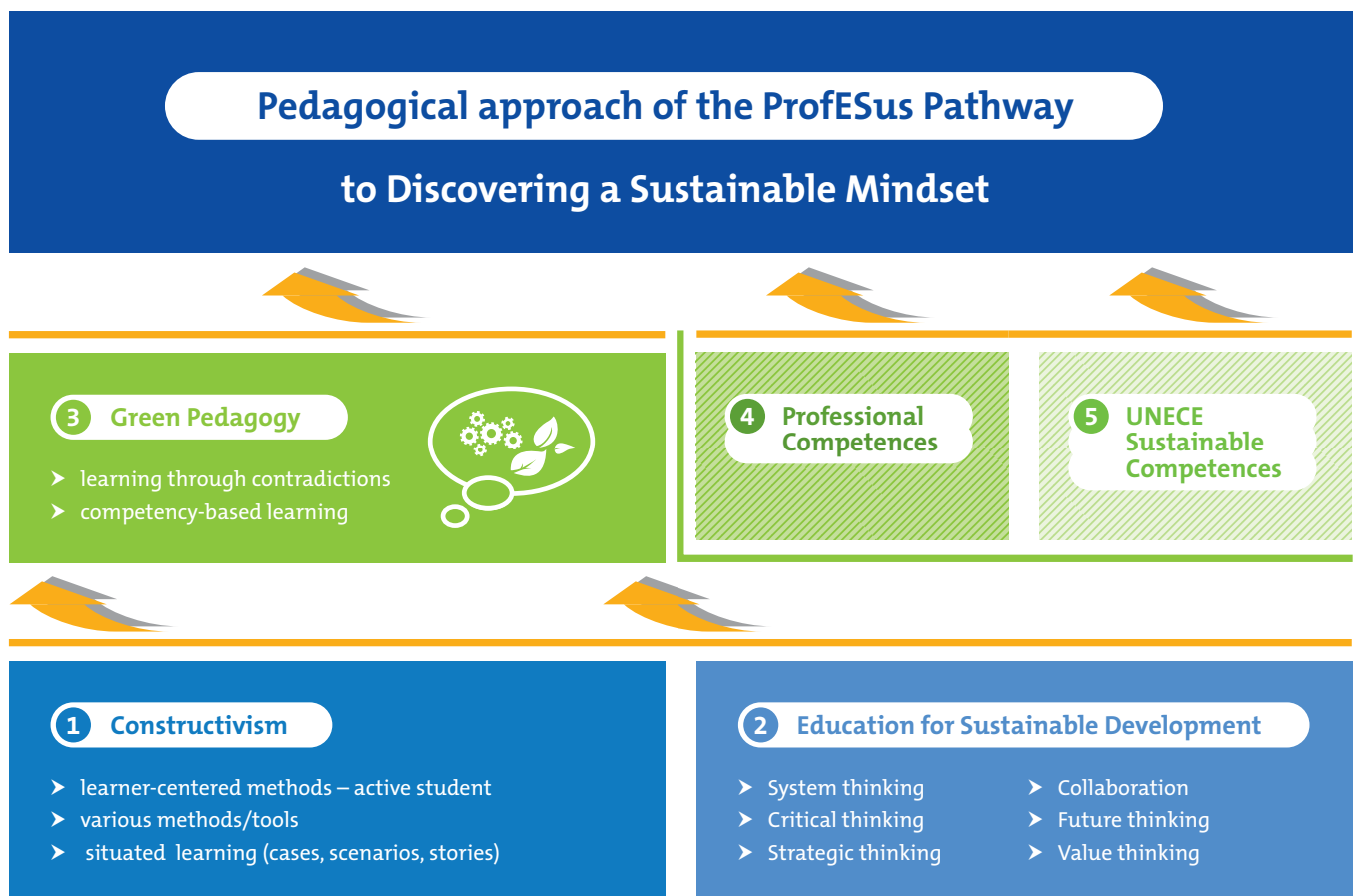
The innovative approach of the education concept **ProfESus Pathway of Discovering a Sustainable Mindset** is built on Green Pedagogy and integrates/combines

- professional competences related to the professional curricula and
- sustainability competencies for learners in vocational training (Source: adapted from UNECE, 2011)

Based on the findings of the ProfESus project it must be realised, that a growing sustainable mindset can only be supported if the learning process includes a strengthening of professional competences accompanied by increasing sustainability competences. A separated approach of increasing professional competences without combining sustainability competences and vice versa, does not lead to the necessary links of knowledge, skills, values and collaboration (see graphic).

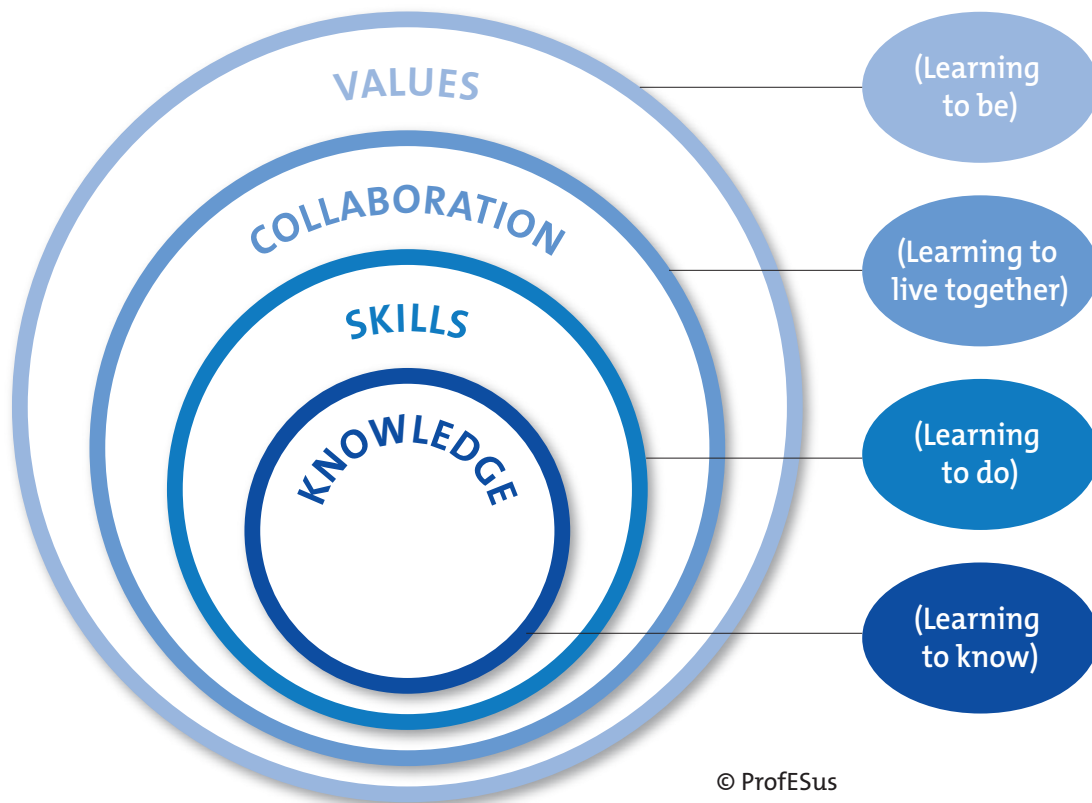
Therefore the use of situated learning including learner-centered methods is essential.

Fig. 3: Pedagogical Approach of the ProfESus Pathway



© ProfESus

Fig. 4: The ways of knowing



The concept of the **ProfESus Pathway to Discovering a Sustainable Mindset** (see Fig. 1) with the integration of professional and sustainable UNECE competences is reflected in the innovative ProfESus Learning activity plan template.

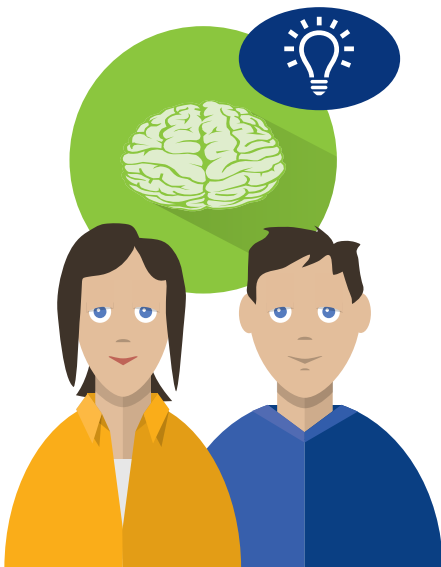
The ProfESus concept and the ProfESus Learning Activity Plan template is used for the ProfESus-blended learning course called “Discovering a Sustainable Mindset – for future thinking professionals in guest-oriented businesses.

Figure 1 shows the complexity of the learning process which has to be considered in detail when developing the learning activity plan.

To assess the process of discovering a sustainable mindset all dimensions of professional and sustainability competences have to be reflected. To get an idea how to assess the growing sustainable mindset please see the document with graphic and description of “**The ProfESus Assessment of a Sustainable Mindset**”.

References:

1. The concept of Green Pedagogy from the University College for Agricultural and Environmental Pedagogy, Vienna
<http://agrарumweltpaedagogik.ac.at/en/index.html>
2. Competencies for ESD (Education for Sustainable Development) teachers. (2008, January). Retrieved from
http://www.unece.org/fileadmin/DAM/env/esd/inf.meeting.docs/EGonInd/8mtg/CSCT%20Handbook_Extract.pdf
3. The Competences in Education for Sustainable Development (Learning for the future: Competences in Education for Sustainable Development). (2011, 7 April). Retrieved from
https://www.unece.org/fileadmin/DAM/env/esd/ESD_Publications/Competences_Publication.pdf



University College for Agrarian and Environmental Pedagogy
Angermayergasse 1, A-1130 Wien
Telephone: +43(0)1 877 22 66/12 (office)
Email:
info@agrарumweltpaedagogik.ac.at
www.profesus.eu

Contact person:
Mrs Johanna Michenthaler
Telephone: +43 (0) 650 720 33 02
Email:
johanna.michenthaler@agrарumweltpaedagogik.ac.at

Authors:
Mrs. Johanna Michenthaler, UCAEP
Mrs. Anne v. Laufenberg-Beermann, IFHE

Design:
GDE | KOMMUNIKATION GESTALTEN